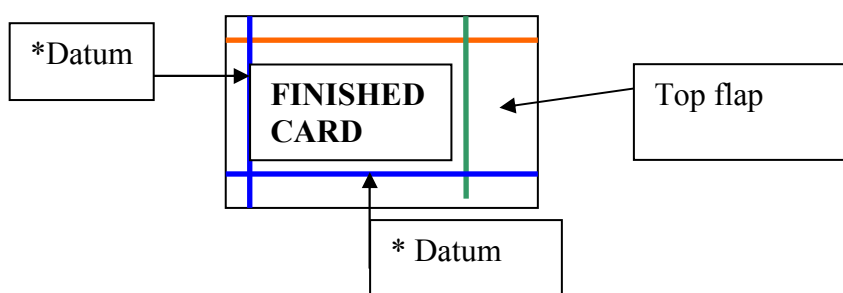


ILLUSION CARD WALLETS

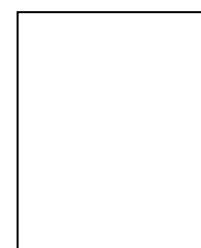
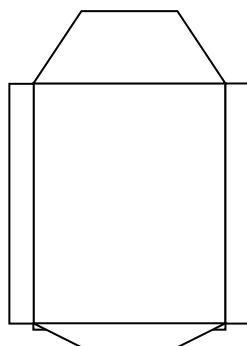
INSTRUCTIONS

1. This unique box maker also allows slim card wallets to be made to fit many sizes of cards of your choice



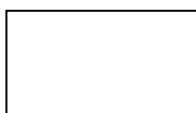
- First score the datum lines on an A4 piece of card
- Next place your finished card onto scored datum lines
- Then place your next score line on the opposite side of your finished card to enclose it
- Score the top of the card making sure that you allow enough space to enclose your card
- Score again to allow a larger area for the wallet top flap as diagram
- Now just snip out a little triangle at each corner on first piece of card – this forms the base of your card wallet
- Now cut away the corners bits as the diagram
- Crease and fold all sides

MAIN FRAME



TOP PIECE

- Cut a second piece of A4 card the same but cut away all four sides to just leave the main top piece as shown.



- **Glue second main top piece onto pocket frame to complete pocket.**
- **Envelope glue can be added to top flap if required.**
- **Note: pretty embossing may be added to the pieces before gluing together if required.**

Thicker pockets can be achieved by scoring a second line close to each other at the left and right hand sides of the pocket main frame piece.